

46th District Membership Summary: Sept 18, 2008

A. Yearly Membership Totals

| Year | Total Individuals | Friends of the 46th - HH | 4600 Club - HH | |
|------|-------------------|--------------------------|----------------|--------------|
| 2003 | 365 | 40 hh | 25 hh | Presidential |
| 2004 | 821 | 81 hh | 46 hh | |
| 2005 | 653 | 59 hh | 45 hh | Presidential |
| 2006 | 548 | 54 hh | 46 hh | |
| 2007 | 459 | 58 hh | 44 hh | |
| 2008 | 834 | 67 hh | 65 hh | |

Four-Year Presidential Cycle

| | | | |
|------|------|------|------|
| | | 2003 | 2004 |
| | | 365 | 821 |
| 2005 | 2006 | 2007 | 2008 |
| 653 | 548 | 461 | |

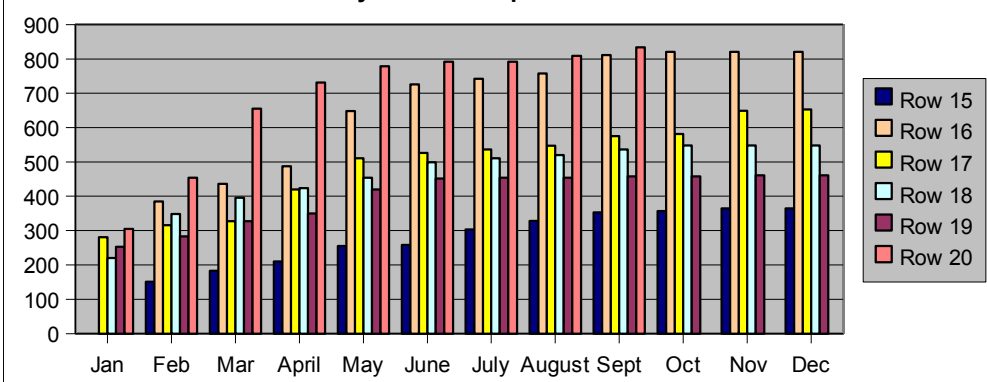
NOTE: To evaluate our success in membership recruitment, we use a 4-year election cycle, with each Presidential year considered the high-water mark.

B. Monthly Membership Totals

| | Jan | Feb | Mar | April | May | June | July | Aug | Sept | Oct | Nov | Dec |
|------|-----|-----|-----|-------|-----|------|------|-----|------------|-----|-----|------------|
| 2003 | | 151 | 183 | 210 | 255 | 258 | 303 | 328 | 353 | 357 | 365 | 365 |
| 2004 | | 385 | 436 | 487 | 648 | 726 | 742 | 758 | 811 | 821 | 821 | 821 |
| 2005 | 281 | 316 | 327 | 420 | 511 | 526 | 536 | 547 | 575 | 581 | 649 | 653 |
| 2006 | 220 | 348 | 396 | 424 | 454 | 499 | 511 | 520 | 536 | 548 | 548 | 548 |
| 2007 | 253 | 283 | 327 | 350 | 420 | 452 | 454 | 454 | 458 | 458 | 461 | 461 |
| 2008 | 305 | 454 | 655 | 731 | 779 | 792 | 792 | 809 | 834 | | | |

WE DID IT! We have exceeded our 2004 highwater mark of 821 members.

Monthly Membership Totals: 2003-2008

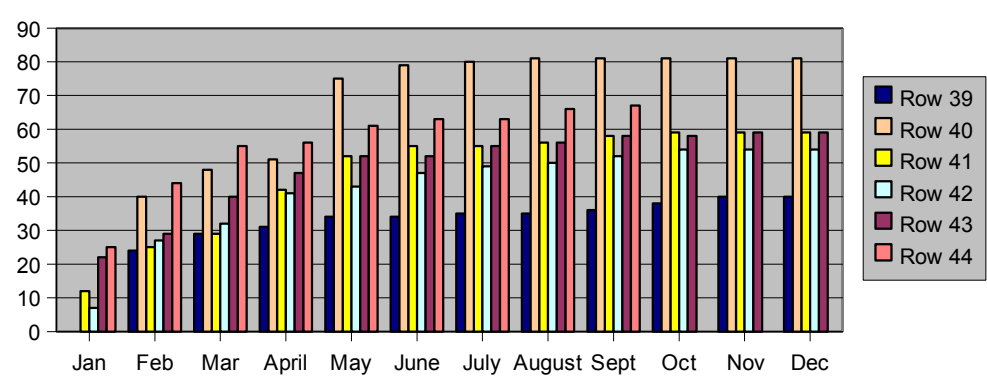


C. Friends of the 46th (\$46 level)

| | Jan | Feb | Mar | April | May | June | July | August | Sept | Oct | Nov | Dec |
|------|-----|-----|-----|-------|-----|------|------|--------|-----------|-----|-----|-----|
| 2003 | | 24 | 29 | 31 | 34 | 34 | 35 | 35 | 36 | 38 | 40 | 40 |
| 2004 | | 40 | 48 | 51 | 75 | 79 | 80 | 81 | 81 | 81 | 81 | 81 |
| 2005 | 12 | 25 | 29 | 42 | 52 | 55 | 55 | 56 | 58 | 59 | 59 | 59 |
| 2006 | 7 | 27 | 32 | 41 | 43 | 47 | 49 | 50 | 52 | 54 | 54 | 54 |
| 2007 | 22 | 29 | 40 | 47 | 52 | 52 | 55 | 56 | 58 | 58 | 59 | 59 |
| 2008 | 25 | 44 | 55 | 56 | 61 | 63 | 63 | 66 | 67 | | | |

Although there has been a drop in this category (15 fewer than in September 2004), **SEE BELOW** for an increase in members of the 4600 Club.

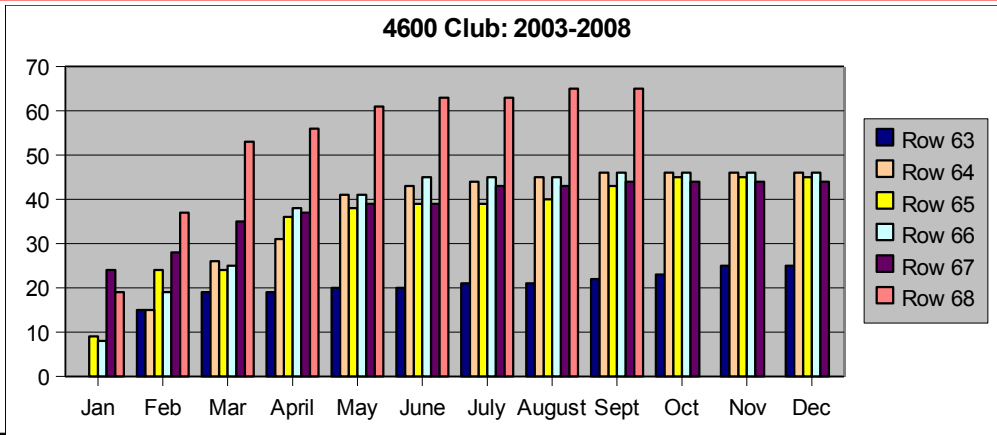
Friends of the 46th: 2003-2008



D. 4600 Club (\$100 level)

| Year | Jan | Feb | Mar | April | May | June | July | August | Sept | Oct | Nov | Dec |
|------|-----|-----|-----|-------|-----|------|------|--------|------|-----|-----|-----|
| 2003 | | 15 | 19 | 19 | 20 | 20 | 21 | 21 | 22 | 23 | 25 | 25 |
| 2004 | | 15 | 26 | 31 | 41 | 43 | 44 | 45 | 46 | 46 | 46 | 46 |
| 2005 | 9 | 24 | 24 | 36 | 38 | 39 | 39 | 40 | 43 | 45 | 45 | 45 |
| 2006 | 8 | 19 | 25 | 38 | 41 | 45 | 45 | 45 | 46 | 46 | 46 | 46 |
| 2007 | 24 | 28 | 35 | 37 | 39 | 39 | 43 | 43 | 44 | 44 | 44 | 44 |
| 2008 | 19 | 37 | 53 | 56 | 61 | 63 | 63 | 65 | 65 | | | |

A record-breaking number!! At the end of 2004, we had only 46 who joined at the \$100 level; today we're at 65.



Betty Means
Membership Vice-Chair