

46th District Membership Summary: August 22, 2009

A. Yearly Membership Totals

Year	Individuals	Friends of the 46th - HH	4600 Club - HH	
2003	365	40 hh	25 hh	Presidential
2004	821	81 hh	46 hh	
2005	653	59 hh	45 hh	Presidential
2006	548	54 hh	46 hh	
2007	459	58 hh	44 hh	
2008	847	68 hh	67 hh	
2009	552	63 hh	42 hh	

Four-Year Presidential Cycle

		2003	2004
		365	821
2005	2006	2007	2008
653	548	461	847
2009			
552			

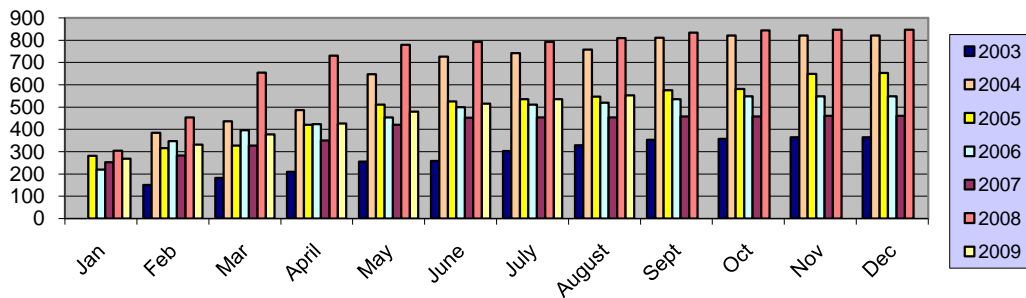
NOTE: To evaluate our success in membership recruitment, we use a 4-year election cycle, with each Presidential year considered the high-water mark.

B. Monthly Membership Totals

	Jan	Feb	Mar	April	May	June	July	Aug	Sept	Oct	Nov	Dec
2003		151	183	210	255	258	303	328	353	357	365	365
2004		385	436	487	648	726	742	758	811	821	821	821
2005	281	316	327	420	511	526	536	547	575	581	649	653
2006	220	348	396	424	454	499	511	520	536	548	548	548
2007	253	283	327	350	420	452	454	454	458	458	461	461
2008	305	454	655	731	779	792	792	809	834	844	847	847
2009	269	331	378	426	480	515	536	552				

2005 membership was 79% of that in 2004, a presidential year. The 2009 goal was to match that 79%. Our August 2009 membership stands at 68% of what we had in August 2008. While we have more members than in 2005 (a comparable year in the 4-year cycle), given the extraordinary turnout in 2008, we may not be able to match the 2005 percentage.

Monthly Membership Totals: 2003-2009

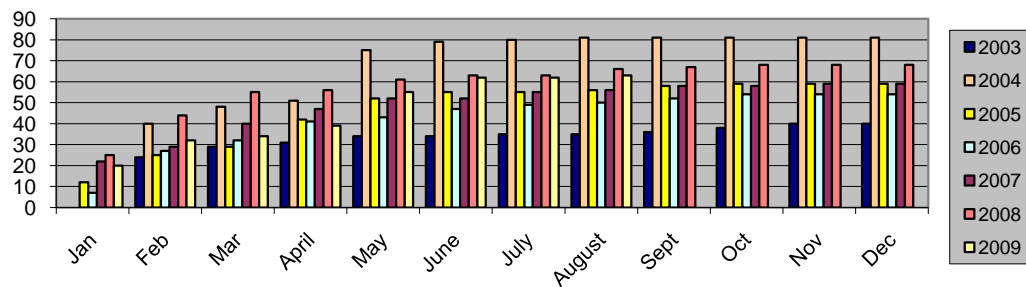


C. Friends of the 46th (\$46 level)

	Jan	Feb	Mar	April	May	June	July	August	Sept	Oct	Nov	Dec
2003		24	29	31	34	34	35	35	36	38	40	40
2004		40	48	51	75	79	80	81	81	81	81	81
2005	12	25	29	42	52	55	55	56	58	59	59	59
2006	7	27	32	41	43	47	49	50	52	54	54	54
2007	22	29	40	47	52	52	55	56	58	58	59	59
2008	25	44	55	56	61	63	63	66	67	68	68	68
2009	20	32	34	39	55	62	62	63				

Despite the economy, we're doing better in this category of membership this year than we were in August 2005. At this point in 2005, we were at 69% of the August 2004 number; currently we're at 95% of the 2008 mark.

Friends of the 46th: 2003-2009

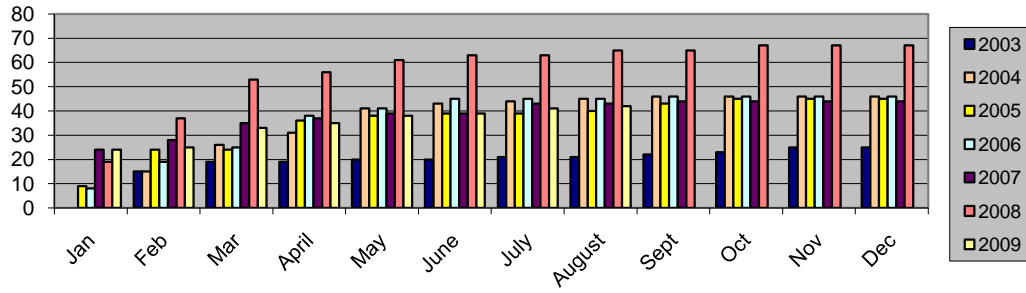


D. 4600 Club (\$100 level)

Year	Jan	Feb	Mar	April	May	June	July	August	Sept	Oct	Nov	Dec
2003		15	19	19	20	20	21	21	22	23	25	25
2004		15	26	31	41	43	44	45	46	46	46	46
2005	9	24	24	36	38	39	39	40	43	45	45	45
2006	8	19	25	38	41	45	45	45	46	46	46	46
2007	24	28	35	37	39	39	43	43	44	44	44	44
2008	19	37	53	56	61	63	63	65	65	67	67	67
2009	24	25	33	35	38	39	41	42				

In this category, we're at 65% of the August 2008 figure. In 2005, we had topped 89% of the 2004 total.

4600 Club: 2003-2009



Betty Means,
Membership Vice-Chair