

46dems Executive Board Meeting

January 4th, 2010

- Review/Approve notes from November meeting

Agenda for this meeting

- Chairs Report
- Committee Chairs
 - Hospitality
 - Elections/PCO
 - Program
 - Platform/Resolutions/Rules
 - Legislative Action
 - Membership
 - Outreach
 - Finance
 - Raymond T. Cole Fund
- Party Reports
 - State Party
 - King County Party

Chair's Report

- Constant Contact
 - Now at 888, up from 868

Any PCO's attending

- Any upcoming house parties or other events for the calendar?

Hospitality/Demogram

- Demogram labels @ 236
 - Printed: 275

Elections

- Committee Report
 - 2010 Election Results Analysis
- PCO Appointments at January Meeting

Program

- November Meeting Review
 - What went well?
 - What we might improve next year.
- January Meeting
 - ReOrganization
- Future plans
 - February – Community Forum? (may move to March)
 - March – Up for grabs if not Community Forum

Platform/Resolutions/Rules

- Bylaws Amendments
- Operating Rules
- Resolution for January

LAC

- LAC Update & Meeting Reports
- Legislative Action Agenda, 2011
(in Demogram)

Membership

- 2010 End of Year Report

| | |
|-----|------------------|
| 7 | Benefactors |
| 52 | 4600 Club |
| 80 | Friends |
| 45 | Families |
| 60 | Individuals |
| 53 | Students/Seniors |
| 32 | Unpaid PCO's |
| 118 | Spouses |
| 447 | Total |

I have done some work to find spouses for our 4600 club members, and I'll continue to do that for our Friends and Family memberships. This should increase our membership numbers a bit.

Membership

- 2011 Beginning of Year Report
 - 15 4600 Club
 - 29 Friends
 - 31 Families
 - 30 Individuals
 - 25 Students/Seniors
 - 72 Unpaid PCO's
 - 55 Spouses
 - 257 Total

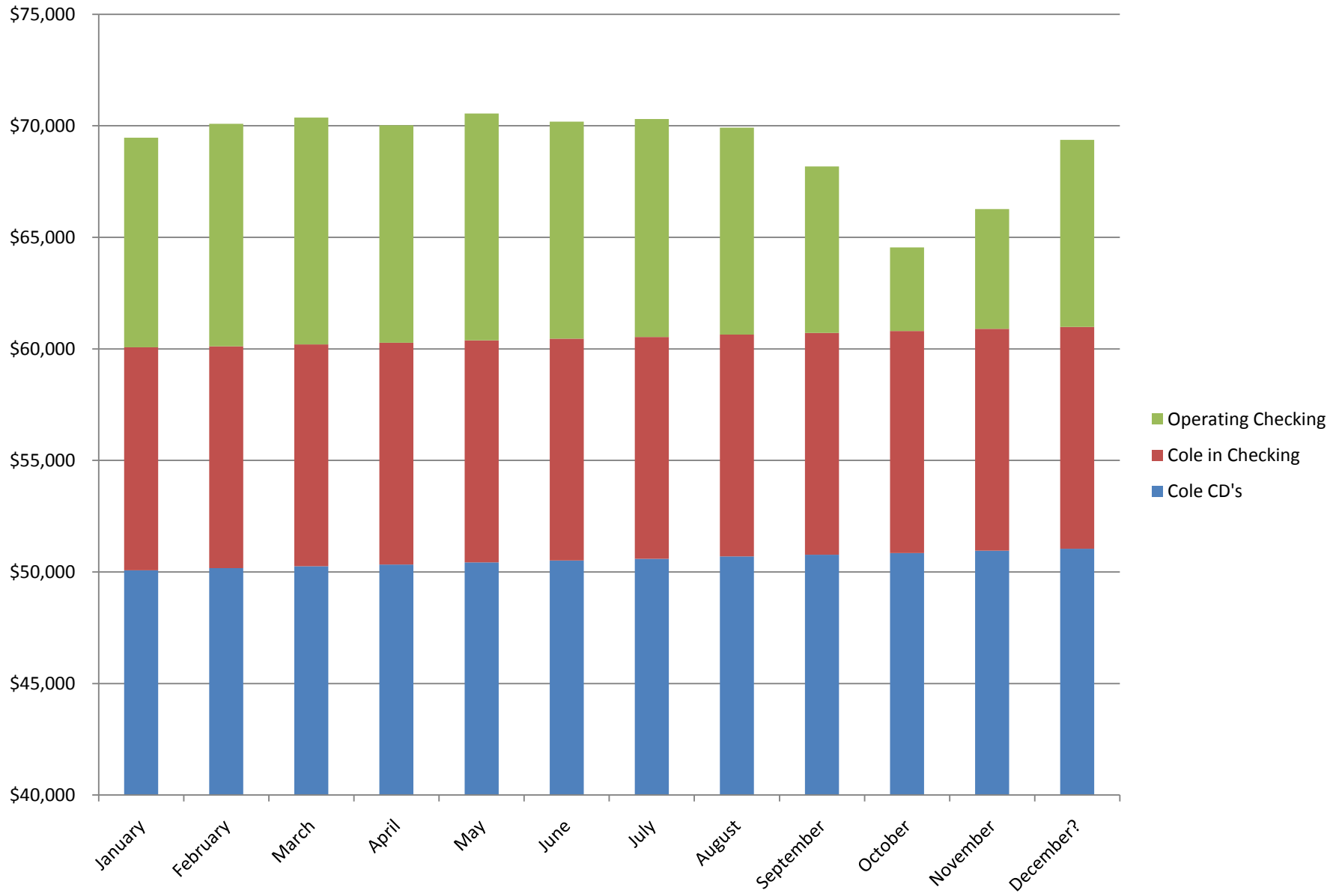
Community Outreach

- Community Forum Update
- Changing Charity Spotlight
- 2011 Community Fair

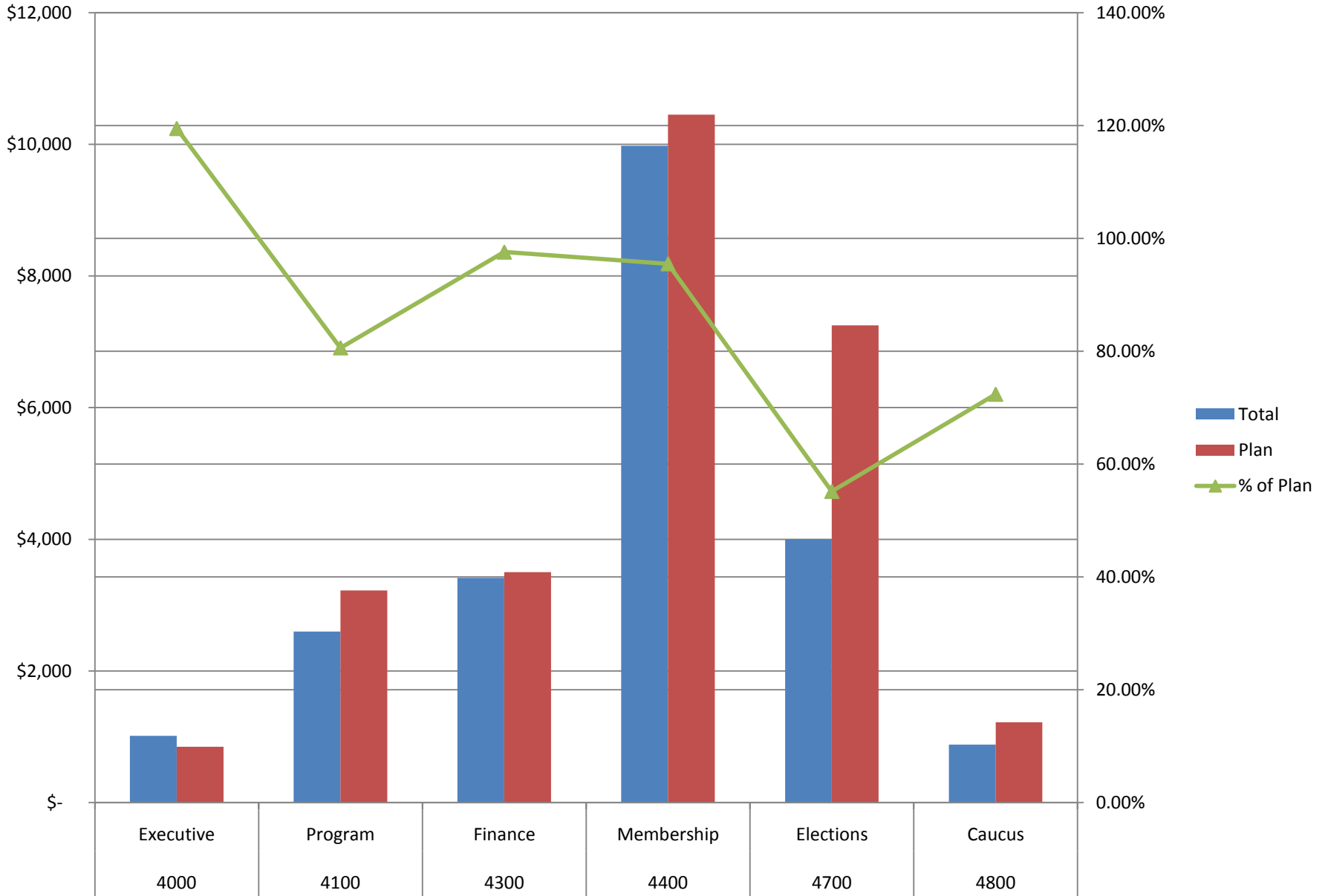
Finance

- Treasurer's Report
- Budget Report
- 2010 Fundraisers
 - Winter Holiday Party, The Landing

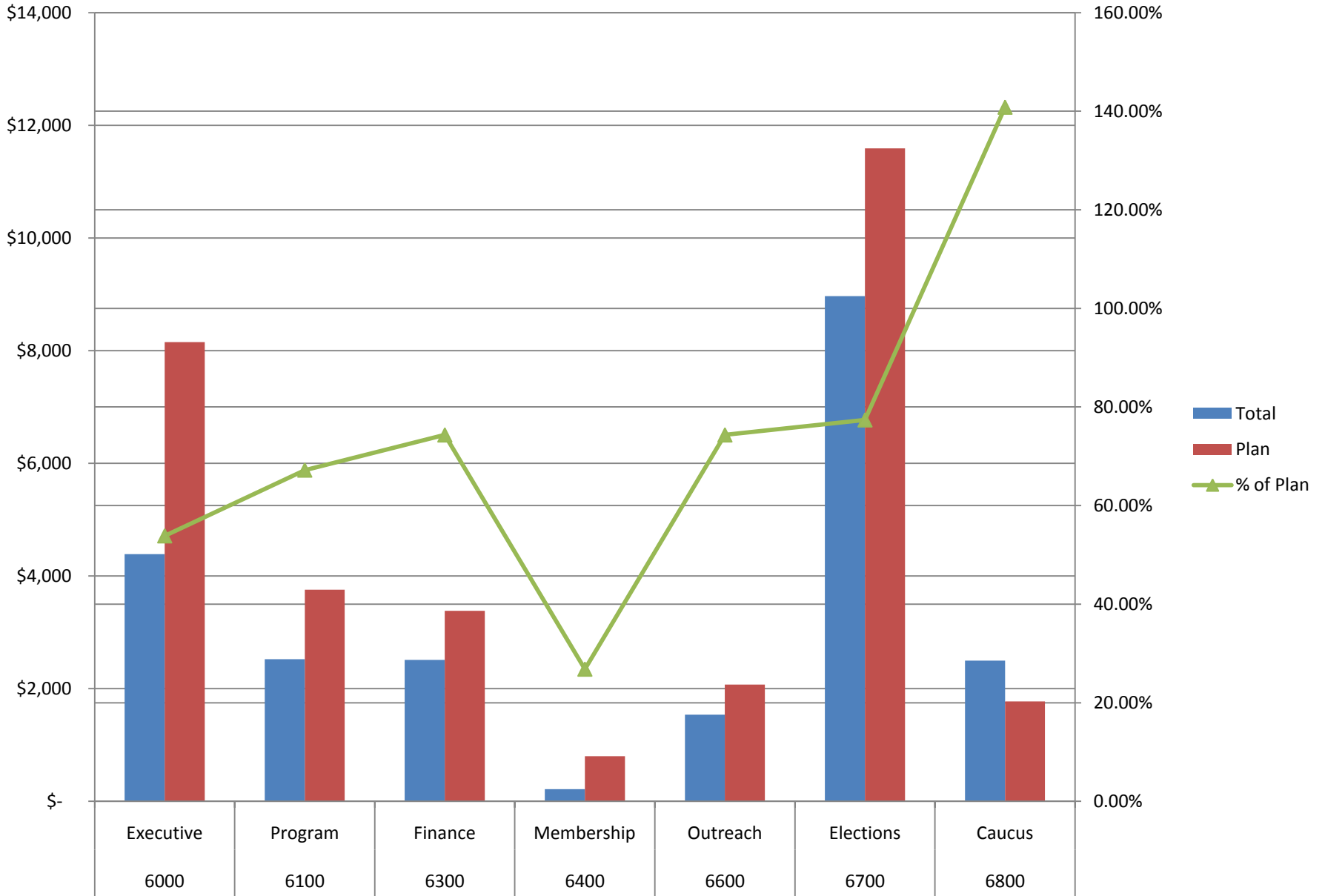
Total Account Balances



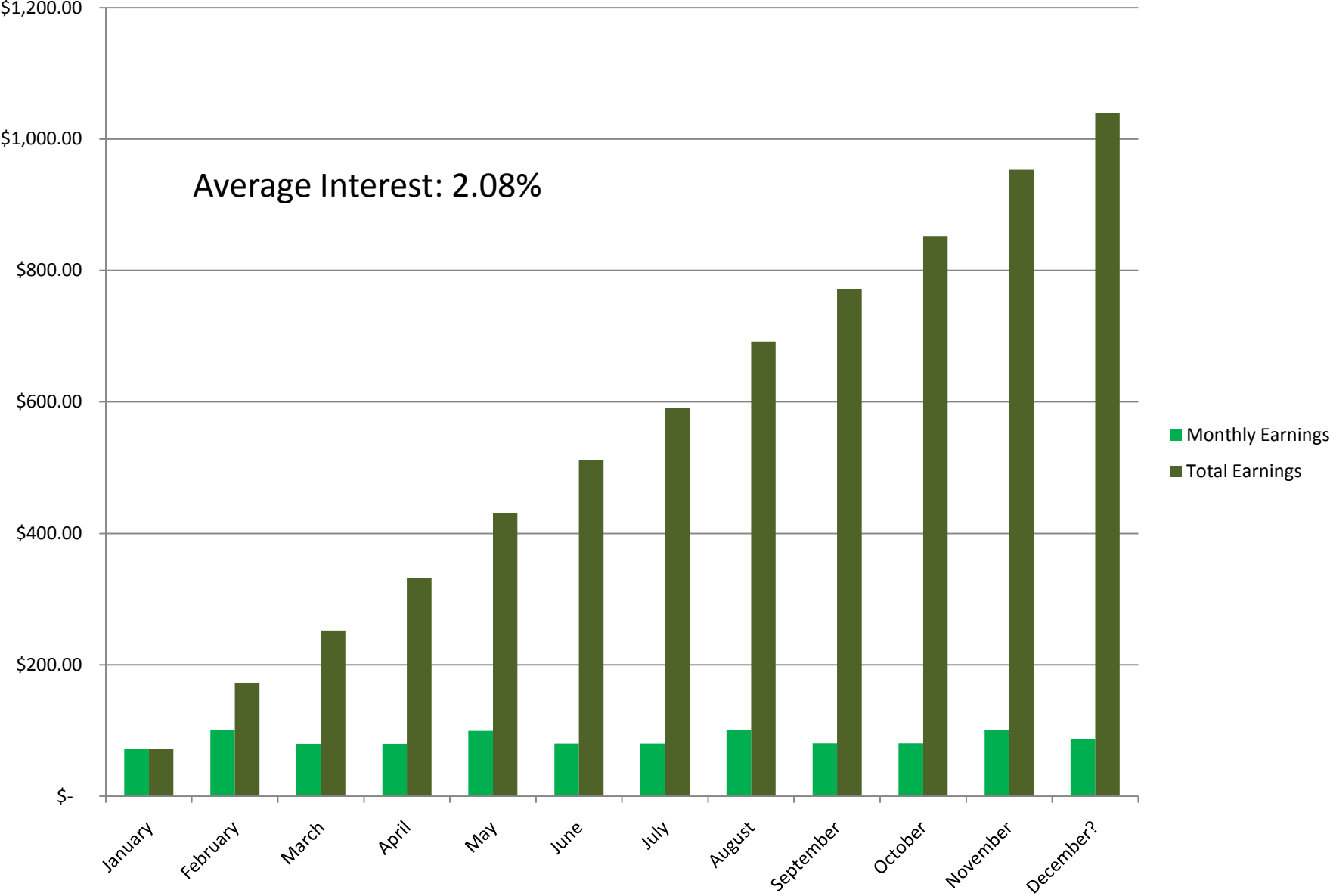
Revenue vs. Plan



Expenses vs. Plan



Cole Fund Interest Earned in 2010



Raymond T. Cole Trust Committee

- Brainstorming Chart

Reports from party reps (State, County)

- State Party
 - WSDCC Reorganization
 - Exec Committee Updates (#meetings, budget)
- King County

Other

- Old business
- New business
- Anything left?
- Good of the Order
- Thank you!!!
- Adjourn